

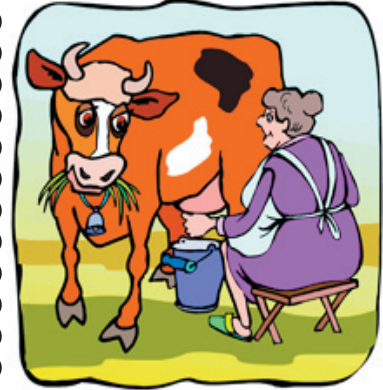
Name: _____ Date: _____

The Letter Home



Dear Mom and Dad,

I am having a wonderful time at Aunt Katie's farm. Yesterday, she taught me how to feed the chickens in the barn. She also showed me how to milk a cow. But I don't like to do that. We are going to the pond this morning to try to catch our dinner. I'll be home soon so that I can get ready to start school.



Love,
Your daughter Jenny

1

This letter was written

- in the summer
- during the school year
- before Jenny came to the farm
- after Jenny left the farm

2

This letter was written mainly to

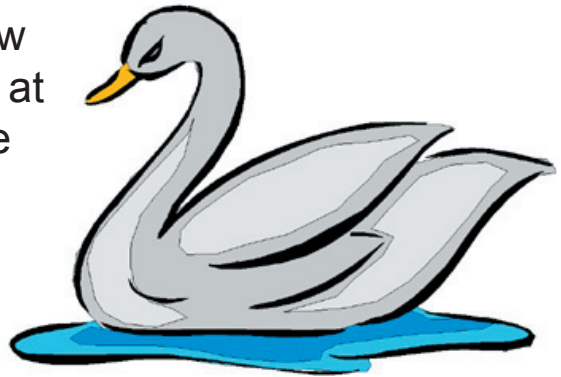
- show how much fun Jenny was having on the farm
- teach you how to take care of farm animals
- get you to visit a farm soon
- tell you about Jenny catching fish in a pond

Name: _____ Date: _____



The Grasshopper and the Swan

A grasshopper went down to a river to drink. The grasshopper fell in and floated along in the water. The grasshopper tried to swim but it was hopeless. A swan saw what was happening. The swan tossed a tree branch into the river. The grasshopper climbed onto the branch and floated to the shore. Later on, the grasshopper saw a hunter. The hunter was taking aim at the swan. The grasshopper stung the hunter on his big toe and saved the swan's life.



3 This story is most like a

- poem
- song
- joke
- fable

5 This story was written to

- teach you about grasshoppers
- tell you a funny story about hunters
- show how friends can help each other
- get you to learn about swans and grasshoppers

4 You can tell this story is make-believe because

- the grasshopper knew how to swim
- the swan knew how to help the grasshopper
- the grasshopper fell into the river
- the swan floated in the water

Answer Key

SAT Standard

Discern reality from make-believe

Identify characteristics of genre

Select an appropriate reading strategy in a given situation

Set purpose for reading

SSS Benchmark

LAA214: Knows strategies to use to discover whether information presented in text is true. (Recognizes the differences between fact and fantasy.)

LAE111: Knows the basic characteristics of fables, stories and legends. (Identifies literary forms.)

LAA211: Determines the main idea or essential message from a text and identifies supporting information.

LAA211: Determines the main idea or essential message from a text and identifies supporting information. (Reads text for a variety of purposes.)

The Letter Home

1. in the summer
2. show how much fun Jenny was having on the farm

The Grasshopper and the Swan

3. fable
4. the swan knew how to help the grasshopper
5. show how friends can help each other